



Type specimens of vascular plants in the herbarium of the National Institute of Biological Resources (II)

HYUN-DO JANG^{1,2}, CHANG-WOO HYUN^{1,3}, SEAH RYU^{1,4} & SANG-JUN LEE^{1,5*}

¹ Plant Resources Division, National Institute of Biological Resources, Incheon 22689, Republic of Korea.

² ✉ zrotowe@korea.kr; <https://orcid.org/0000-0001-7556-3682>

³ ✉ john0920@korea.kr; <https://orcid.org/0000-0001-9677-5270>

⁴ ✉ vernalis@korea.kr; <https://orcid.org/0000-0001-7168-6298>

⁵ ✉ lsj76@korea.kr; <https://orcid.org/0000-0002-1129-8290>

*Author for Correspondence: ✉ lsj76@korea.kr

Abstract

We provide information on 143 sheets of type specimens of 39 species and infraspecific taxa of vascular plants stored in the herbarium of the National Institute of Biological Resources. The specimens were donated by Changwon National University (Prof. Hyeok-Jae Choi), Chungbuk National University (Prof. Byoung-Un Oh), Ewha Womans University (Prof. Chang-Sook Lee), Hallym University (Prof. Young-Dong Kim), Jeonbuk National University (Prof. Muyeol Kim), Korea National Arboretum, Mokwon University (Prof. Jeong Ki Sim), Sungkyunkwan University (Prof. Seung-Chul Kim), and some researchers at KB. The specimens included four sheets for holotypes, 46 sheets for isotypes, and 93 sheets for paratypes of three species and infraspecific taxa of pteridophytes, 21 dicotyledons, and 15 monocotyledons. Nine sheets were sourced from China and 134 sheets were sourced from Korea.

Keywords: KB, Korea, National Institute of Biological Resources, Type specimens, Vascular plants

Introduction

A herbarium is a collection of plant specimens that serves as a store of reference material, a means of identification by matching unnamed plants with named specimens in the collection, an arbiter of correct names, and a comprehensive databank (Bridson & Forman 1998). The herbarium of the National Institute of Biological Resources (KB) opened in 2007, is the largest national herbarium in the Republic of Korea, and houses more than 700,000 vascular plant specimens collected from the Korean peninsula and its neighboring countries (National Biodiversity Center 2020). In particular, more than 100 type specimens of vascular plants have been denoted to the KB by several universities and institutes (Jang *et al.* 2020). The application of names of taxonomic groups is determined by means of nomenclatural types (Turland *et al.* 2018); therefore, type specimens of species and infraspecific taxa are key materials that facilitate taxonomic research.

Article 40.7 of the current *International Code of Nomenclature for algae, fungi, and plants* (hereafter referred to as “the *Code*”, Turland *et al.* 2018) states that “For the name of a new species or infraspecific taxon published on or after 1 January 1990 of which the type is a specimen or unpublished illustration, the single herbarium, collection, or institution in which the type is conserved must be specified.” Type specimens can, however, be transferred from the herbarium specified in the original publication to another herbarium for a variety of reasons, resulting in difficulties for researchers examining the type specimens. In a previous article (Jang *et al.* 2020), information on type specimens of 33 species (94 sheets) of vascular plants in KB were provided, most of which were transferred from other universities and institutes. Here, we provide information on additional type specimens stored in KB that were donated by the herbaria of Changwon National University (Prof. Hyeok-Jae Choi), Chungbuk National University (Prof. Byoung-Un Oh), Ewha Womans University (Prof. Chang-Sook Lee), Hallym University (Prof. Young-Dong Kim), Jeonbuk National University (Prof. Muyeol Kim), Korea National Arboretum (KH), Mokwon University (Prof. Jeong Ki Sim), Sungkyunkwan University (Prof. Seung-Chul Kim), and some researchers of the National Institute of Biological Resources.

We provide information on type specimens in KB, including families, scientific names, types, localities, dates, collector names, and protologue citations. The family names of pteridophytes are arranged according to Smith *et al.* (2006), and the family names of angiosperms are arranged according to Cronquist (1981) as they are in the KB, while genera and scientific names are arranged in alphabetical order. The specimens' localities, dates of collection, and collectors' names are inscribed in accordance with their labels and are provided in as much detail as possible. Herbarium abbreviations are used with reference to the Index Herbariorum (<http://sweetgum.nybg.org/science/ih/>).

In total, information on 143 sheets (4 holotypes, 46 isotypes, and 93 paratypes), including 39 taxa, is provided here. One form and two nothospecies were assigned to two genera of two families of pteridophytes. Twelve species, four varieties, one form, and four nothospecies were assigned to 15 genera of 14 families of dicotyledons. Thirteen species, one variety, and one form were assigned to eleven genera of seven families of monocotyledons. Thirty-four taxa (134 sheets) were collected from Korea and five taxa (nine sheets) from China (including Mt. Baekdusan). Twenty-six taxa (39 sheets) were donated by Prof. Muyeol Kim (JNU) in January 2021. Prof. Kim also donated type specimens housed in JNU to the Korea National Arboretum (KH) and the Nakdonggang National Institute of Biological Resources (NNH) (M. Kim, pers. comm.).

Type specimens in the herbarium of the National Institute of Biological Resources

Hymenophyllaceae

Hymenophyllum wrightii f. *serratum* C.S. Lee & Kanghyup Lee (2014: 234)

Isotype: KOREA, Jeju-do: Mt. Hallasan, 1 December 2013, C.S. Lee & K. Lee *LeeCS131201* (NIBRVP760271).

Paratypes: KOREA, Jeju-do: Mt. Hallasan, 1 June 2014, C.S. Lee & K. Lee *LEECS14060102* (NIBRVP760274), *LEECS14060103* (NIBRVP815261).

Note: The collection date differs between the labels of the paratype specimens (1 June 2014) and the protologue (10 November 2014). According to Art. 9.2 of the *Code* (Turland *et al.* 2018), a correction is needed for the paratype citation. The collecting number of NIBRVP815261 was originally labeled as *LEECS14060102*, but this is a typographical error and should read *LEECS14060103* (C. S. Lee, per. comm.). The holotype is deposited in EWH.

Aspleniaceae

Asplenium × *bimixtum* C.S. Lee & Kanghyup Lee ex Y.H. Ha (2020: 295)

Replaced synonym: *Asplenium* × *montanum* C.S. Lee & Kanghyup Lee (2015: 364), as '*montanus*', non *A. montanum* Willd. (1810: 342)

Isotype: KOREA, Gyeonggi-do: Yeoncheon-gun, Dongmak-ri, Mt. Seongsan, 20 September 2014, C.S. Lee & K. Lee *LeeCS14092001* (NIBRVP760273; Fig. 1-1).

Note: *Asplenium* × *bimixtum* (Ha *et al.* 2020: 295) was published as a replacement name for *A.* × *montanum* C.S. Lee & Kanghyup Lee (Lee *et al.* 2015: 364), an illegitimate homonym of *A. montanum* Willd. (Willdenow 1810: 342). Therefore, according to Art. 7.4 of the *Code* (Turland *et al.* 2018), the type specimen of *A.* × *bimixtum* is the type specimen of *A.* × *montanum* C.S. Lee & Kanghyup Lee. The holotype (KHB1533236) and another isotype (KHB1533237) are deposited in KH (!).

Asplenium × *uiryeongse* C.S. Lee & Kanghyup Lee (2015: 363)

Isotype: KOREA, Seoul: Ui-dong, Mt. Bukhansan, 27 August 2013, C.S. Lee & K. Lee *LeeCS13082701* (NIBRVP760272; Fig. 1-2).

Note: The holotype is deposited in KH (KHB1533235!).

Ranunculaceae

Anemone pendulisepala Y.N. Lee ex M. Kim (August 2017: 69), non *A. pendulisepala* Y.N. Lee (June 2017: 200)

Isotype: KOREA, Gangwon-do: Hoengseong-gun, Mt. Cheongtaesan, 19 April 2014, M. Kim & H. Jo *MKA14049* (NIBRVP814947; Fig. 1-3).



FIGURE 1. Type specimens in the herbarium of the National Institute of Biological Resources.

1. *Asplenium ×bimixtum*, 2. *Asplenium ×uiryeongse*, 3. *Anemone pendulisejala*, 4. *Broussonetia ×hanjiana*, 5. *Pseudostellaria baekdusanensis*, 6. *Pseudostellaria ×bohyeonsanensis*, 7. *Pseudostellaria palibiniana* var. *gageodoensis*, 8. *Pseudostellaria ×segeolsanensis*, 9. *Viola breviflora*.

Note: This isotype was transferred to KB from JNU. *Anemone pendulisepala* Y.N. Lee ex M. Kim (Kim 2017: 69) is a later homonym of the validly published name *A. pendulisepala* Y.N. Lee (Son *et al.* 2017: 200) and is therefore illegitimate. The holotype of *A. pendulisepala* Y.N. Lee ex M. Kim is conserved in KH (!), and another isotype is conserved in NNH (!).

Moraceae

Broussonetia ×hanjiana M. Kim (2009: 82)

Isotypes: KOREA, Jeollanam-do: Is. Gageodo, 16 May 2008, *M. Kim 9944* (2 sheets, NIBRVP815074, NIBRVP815075; Fig. 1-4).

Note: Two sheets of *M. Kim 9944*, stamped as isotypes, were transferred to KB from JNU. The holotype and one sheet of the isotype are conserved in KH (!), and one sheet of the isotype is conserved in NNH (!).

Caryophyllaceae

Pseudostellaria baekdusanensis M. Kim (2014: 172)

Isotype: [CHINA]: Mt. Baekdusan, 20 May 2014, *M. Kim 20140241* (NIBRVP814932; Fig. 1-5).

Paratype: [CHINA]: Mt. Baekdusan, 12 June 2014, *M. Kim 20140245* (NIBRVP814931).

Note: These specimens were transferred to KB from JNU. The holotype *M. Kim 20140241* is conserved in KH (!). Jo *et al.* (2014) designated *M. Kim 20140241* at JNU as the holotype and *M. Kim 20140242*, *20140243*, and *20140244* at JNU as the isotypes in the protologue. All isotype specimens, however, were stamped as isotypes and recorded as *M. Kim 2014021* in KB, KH, and NNH. Therefore, according to Art. 9.2 of the *Code* (Turland *et al.* 2018), a correction to the isotype citation is needed. Three sheets of paratypes (*M. Kim 2014245*) are conserved in KH (!).

Pseudostellaria ×bohyeonsanensis M. Kim & H. Jo (2019: 164).

Isotype: KOREA, Gyeongsangbuk-do: Cheongsong-gun, Hyeonseo-myeon, Muge-ri, Mt. Bohyunsan, 25 May 2016, *H. Jo JG52502* (NIBRVP814954; Fig. 1-6).

Note: The isotype was transferred to KB from JNU. The holotype is deposited in KH (!), and another isotype is conserved in NNH (!).

Pseudostellaria palibiniana* var. *gageodoensis M. Kim & H. Jo (2019: 161)

Isotype: KOREA, Jeollanam-do: Sinan-gun, Heuksan-myeon, Gageodo-ri, 11 April 2018, *H. Jo JI41116* (NIBRVP814945; Fig. 1-7).

Note: This specimen was transferred to KB from JNU. The holotype is deposited in KH (!), and another isotype is preserved at NNH (!).

Pseudostellaria ×segeolsanensis M. Kim & H. Jo (2019: 171)

Isotype: KOREA, Jeollabuk-do: Namwon-si, Jucheon-myeon, Gogi-ri, Mt. Segeolsan, 30 April 2018, *H. Jo JI43008* (NIBRVP814955; Fig. 1-8).

Note: The isotype was transferred to KB from JNU. The holotype and another isotype are preserved in KH (!) and NNH (!), respectively.

Violaceae

Viola breviflora Jungsim Lee & M. Kim (2014: 84)

Isotype: KOREA, Gangwon-do: Mt. Seokbyongsan, 26 April 2014, *J. Lee & M. Kim MKV20140003* (NIBRVP814939; Fig. 1-9).

Note: This specimen was transferred to KB from JNU. The collecting number of NIBRVP814939 was originally labeled *MKV20140001*, but was corrected to *MKV20140003* with a pencil. The correct collecting number is *MKV20140003* (J. Lee, pers. comm.). Another isotype of *MKV20140002* is conserved in NNH (!); this specimen was also originally labeled *MKV20140001* but was corrected to *MKV20140002* with a pencil. The *V. breviflora* holotype is deposited in KH (!).

Viola ulleungdoensis M. Kim & Jungsim Lee (2012: 203)

Isotype: KOREA, Gyeongsangbuk-do: Ulleung-gun, Anpyeongjeon, 24 April 2012, *M. Kim, J. Lee & C. Choi MKV20120001* (NIBRVP814940; Fig. 1-10).

Note: This specimen was transferred to KB from JNU. The holotype *MKV20120001* is deposited in KH (!). Lee *et al.* (2012) cited *MKV20120002* and *20210003* as isotypes in the protologue. However, three sheets of *MKV20120001*, stamped as isotypes, were found: one is conserved in KB (NIBRVP814940), another in KH (!), and third in NNH (!). Therefore, according to Art. 9.2 of the *Code* (Turland *et al.* 2018), a correction to the isotype citation is needed.

Saxifragaceae

Astilbe uljinensis B.U. Oh & H.J. Choi (2020: 91).

Isotypes: KOREA, Gyeongsangbuk-do: Uljin-gun, Sangdanggyo bridge, 16 July 2015, *B.U. Oh 150716-1* (2 sheets, NIBRVP815304; Fig. 1-11, NIBRVP815305).

Note: These specimens, which were transferred to KH from CBU, were donated by KH. The holotype is deposited in KH (KHB1608798!).

Chrysosplenium ramosissimum Y.I. Kim & Y.D. Kim (2018: 3).

Isotype: KOREA, Gangwon-do: Pyeongchang-gun, Daegwallyeong-myeon, Hoenggye-ri, Mt. Seonjaryeong, 24 April 2015, *Y.-I. Kim, Y.-D. Kim, S. Cho, D.-H. Kang & J. Lee KYI-2015001* (NIBRVP815156; Fig. 1-12).

Note: The holotype is deposited in HHU (!).

Chrysosplenium macrospermum Y.I. Kim & Y.D. Kim (2019: 40).

Isotype: CHINA, Jilin: Changchun, Antu Country, Mt. Beakdusan (Mt. Changbaishan in Chinese), near Cheon-Ji (Tianchi in Chinese) Crater Lake, 26 July 2017, *J.-H. Chen, Y.-I. Kim & S. Lee KYI-2017001* (NIBRVP815157; Fig. 1-13).

Paratype: CHINA, Jilin: Changchun, Antu Country, Mt. Beakdusan (Mt. Changbaishan in Chinese), near Cheon-Ji (Tianchi in Chinese) Crater Lake, 26 July 2017, *J.-H. Chen, Y.-I. Kim & S. Lee KYI-2017006* (NIBRVP821240).

Note: The holotype is deposited in HHU (!).

Rosaceae

Potentilla baekdusanensis M. Kim (2018: 37)

Isotype: [CHINA]: Mt. Baekdusan, 23 April 2017, *M. Kim MK176212* (NIBRVP814942; Fig. 1-14).

Note: The holotype is conserved in KH (!), and another isotype is preserved in NNH (!).

Potentilla gageodoensis M. Kim (2014: 175)

Isotype: KOREA, Jeollanam-do: Is. Gageodo, 4 May 2014, *M. Kim 20140121* (NIBRVP814938; Fig. 1-15).

Note: This specimen was transferred to KB from JNU. In the protologue, So *et al.* (2014) cited *M. Kim 20140121* at JNU as the holotype and *M. Kim 20140122* and *20140123* at JNU as isotypes. We found the holotype (KH!), but we did not examine *M. Kim 20140122* and *20140123*. However, two sheets of *M. Kim 20140121*, stamped as isotypes, were found: one is conserved in KB (NIBRVP814938) and the other in NNH (!). Therefore, according to Art. 9.2 of the *Code* (Turland *et al.* 2018), a correction to the isotype citation is needed.

Fabaceae

Vicia unijuga* var. *ulsaniana M. Kim & H. Jo (2017: 221)

Isotype: KOREA, Ulsan-si: Ulju-gun, Seosaeng-myeon, Ganjeolgot, 7 June 2015, *H. Jo JF60716* (NIBRVP814956; Fig. 1-16).



FIGURE 1. (Continued)
 10. *Viola ulleungdoensis*, 11. *Astilbe uljinensis*, 12. *Chrysosplenium ramosissimum*, 13. *Chrysosplenium macrospermum*, 14. *Potentilla baekdusanensis*, 15. *Potentilla gageodoensis*, 16. *Vicia unijuga* var. *ulsaniana*, 17. *Daphne jejuensis*, 18. *Euonymus baekdusanensis*.

Note: This specimen was transferred to KB from JNU. The holotype and another isotype are preserved in KH (!).

Thymelaeaceae

Daphne jejuensis M. Kim (2013: 95)

Isotype: KOREA, Jeju-do: Seonheul, 15 March 2013, *M. Kim 130201* (2 sheets, NIBRVP814935; Fig. 1-17, NIBRVP815073).

Paratype: KOREA, Jeju-do: Seonheul, 3 June 2013, *M. Kim 13213* (NIBRVP814934).

Note: In the protologue of *D. jejuensis*, Lee *et al.* (2013: 95) designated five sheets of *M. Kim 130201* at JNU as isotypes. Two sheets of isotypes were transferred to KB from JNU. Another two sheets of isotypes are conserved in KH (!), and the fifth sheet is conserved in NNH (!). Additionally, one specimen of paratype (*M. Kim 13213*) was transferred to KB from JNU, and Lee *et al.* (2013) reported the preservation of another paratype (*Y. Kang s.n.*) at KB; however, the specimen was indeed stored at KH (!), and not at KB. The holotype is conserved in KH (!).

Celastraceae

Euonymus baekdusanensis M. Kim (2013: 168)

Isotype: [CHINA]: Mt. Baekdusan, 12 August 2011, *M. Kim 110060* (NIBRVP814950; Fig. 1-18).

Paratype: [CHINA]: Mt. Baekdusan, 12 June 2012, *M. Kim 120305* (NIBRVP814951).

Note: In the protologue of *E. baekdusanensis*, Hwang *et al.* (2013: 168) designated three sheets of *M. Kim 110060* at JNU as isotypes and five sheets of *M. Kim 120305* at JNU as paratypes. One sheet of *M. KIM 110060* and one sheet of *M. Kim 120305* were transferred to KB from JNU. The rest of *M. Kim 110060* are conserved in KH (!) and NNH (!), and one sheet of *M. Kim 120305* is preserved at KH (!). The holotype of *E. baekdusanensis* is deposited in KH (!).

Aquifoliaceae

Ilex ×wandoensis C.F. Mill. & M. Kim (2002: 294)

Isotype: KOREA, Jeollanam-do: Is. Wando, 15 April 2000, *M. Kim 4655* (NIBRVP814941; Fig. 1-19).

Note: This specimen was transferred to KB from JNU. The holotype is deposited in KH (!), and another isotype is conserved in NNH (!).

Aceraceae

Acer ginnala f. *jeonjuana* M. Kim (2017: 545)

Isotype: KOREA, Jeollabuk-do: Wanju-gun, Gosan, 17 August 2000, *M. Kim MK00701* (NIBRVP814957).

Note: This specimen was transferred to KB from JNU. The holotype is preserved at KH (!), and another isotype is deposited in NNH (!).

Scrophulariaceae

Pseudolysimachion pyrethrinum var. *gasanensis* M. Kim & H. Jo (2017: 293)

Isotype: KOREA, Gyeongsangbuk-do: Chilgok-gun, Mt. Gasan, 31 August 2015, *H. Jo JF73117* (NIBRVP814933; Fig. 1-20).

Note: This isotype was transferred to KB from JNU, and another isotype is conserved in NNH (!). The holotype is preserved in KH (!).

Rubiaceae

Galium verum var. *hallasanense* M. Kim (2017: 312)

Isotype: KOREA, Jeju-do: Mt. Hallasan, 24 July 2015, *H. Jo JF72414* (NIBRVP814958; Fig. 1-21).

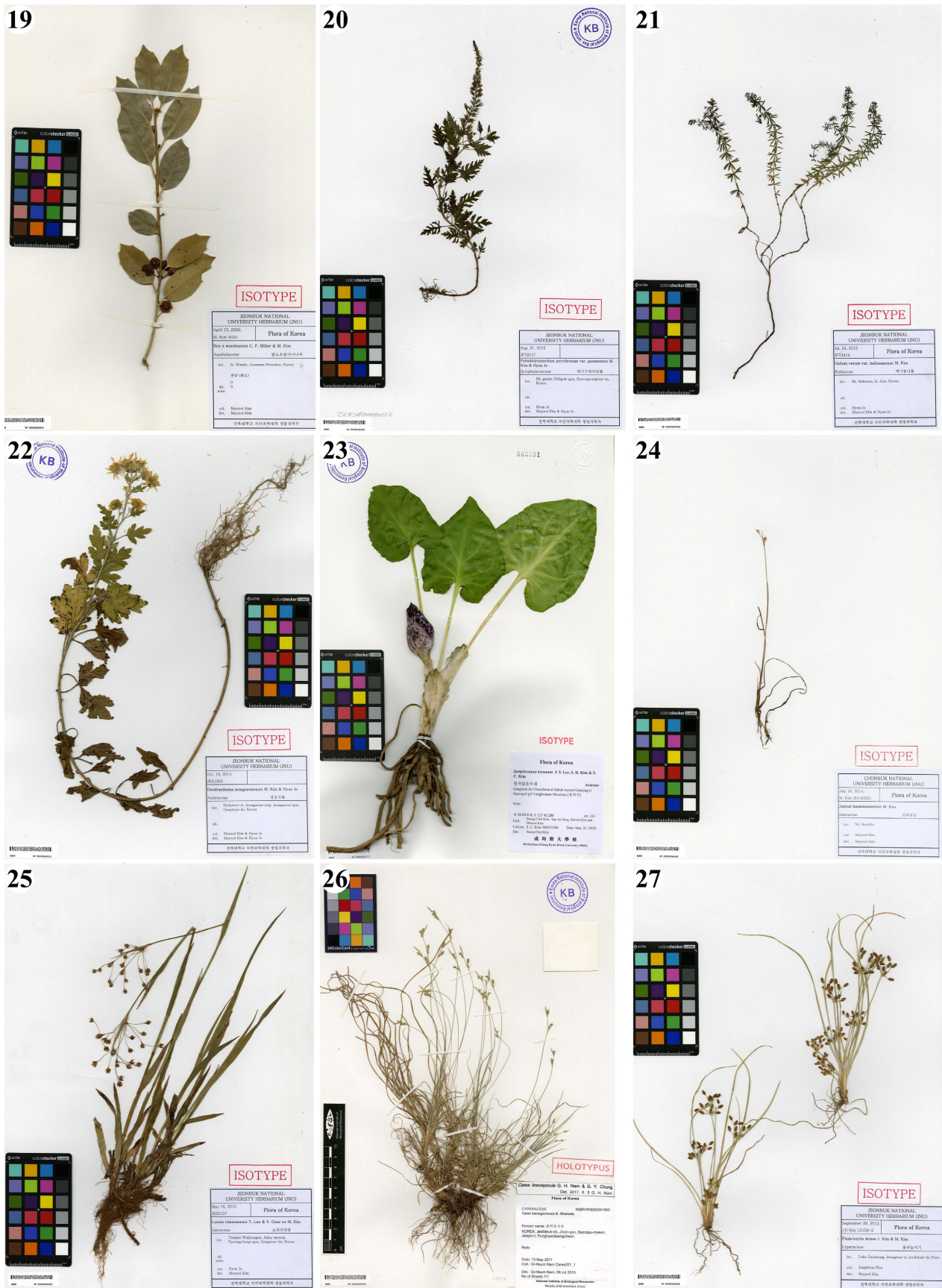


FIGURE 1. (Continued)

19. *Ilex wandoensis*, 20. *Pseudolysimachion pyrethrinum* var. *gasanensis*, 21. *Galium verum* var. *hallasanense*, 22. *Dendranthema jeongseonensis*, 23. *Symplocarpus koreanus*, 24. *Juncus baekdusanensis*, 25. *Luzula odaesanensis*, 26. *Carex brevispicula*, 27. *Fimbristylis driziae*.

Note: This isotype was transferred to KB from JNU, and another isotype was deposited in NNH (!). The holotype was preserved in KH (!). The name *Galium verum* var. *hallaensis* K.S. Jeong & K. Choi was published by Jeong *et al.* (2017: 95) as a replacement name for *G. pusillum* Nakai, which is a later homonym of *G. pusillum* L. (1753: 106). Kim (2017) published the name *G. verum* var. *hallasanense*, citing *G. pusillum* Nakai as a synonym. However, *G. verum* var. *hallasanense* is not a replacement name for *G. pusillum* Nakai, because Kim (2017) published the name as the name of a new taxon with an English description and indicated that the type differs from that of *G. pusillum* Nakai (see Art. 6.13 of the *Code*). Meanwhile, Son & Chang (2019) argued that the name *G. verum* var. *hallasanense* is a later homonym of *G. verum* var. *hallaensis*, because “both the epithet ‘*hallaensis*’ and ‘*hallasanense*’ are sufficiently alike to be considered homonymous, and are derived from Mt. Halla of Jeju Island, Republic of Korea”. However, the epithet ‘*hallasanense*’, which has an additional syllable ‘-san-’, is not spelled exactly like ‘*hallaensis*’. These epithets are not likely to be confused, and should not be treated as homonyms.

Asteraceae

Dendranthema jeongseonensis M. Kim & H. Jo (2017: 341)

Isotype: KOREA, Gangwon-do: Jeongseon-gun, Jeongseon-eup, Deokwoo-ri, 18 October 2014, *M. Kim & H. Jo JEA1805* (NIBRVP814959; Fig. 1-22).

Note: This isotype was transferred to KB from JNU. The holotype is conserved in KH (!), and another isotype is preserved in NNH (!).

Araceae

Symplocarpus koreanus J.S. Lee, S.H. Kim & S.C. Kim (2021: 2)

Isotype: KOREA, Gangwon-do: Chuncheon-si, Sabuk-myeon, Goseong-ri, Mt. Yonghwasan, 21 March 2020, *S.C. Kim 200321500* (NIBRVP815477; Fig. 1-23).

Paratypes: KOREA, Gyeonggi-do: Gapyeong-gun, Buk-myeon, Baekdun-ri, Mt. Yeoninsan, 3 May 2013, *W.B. Lee s.n.* (NIBRVP517078); Gapyeong-gun, Oeseo-myeon, Mt. Hwayasan, 26 June 2007, *W.K. Paik VP-KB-377062-0173* (NIBRVP815507); Gapyeong-gun, Sang-myeon, Haenghyeon-ri, Mt. Chungnyeongsan, 31 March 2012, *J.H. Kim, Y.J. Kim & I.S. Yoon KIMJH12006* (3 sheets, NIBRVP355001); Gapyeong-gun, Sang-myeon, Haenghyeon-ri, Mt. Chungnyeongsan, 29 March 2016, *G.H. Nam, J.H. Kim & J.K. Hong L16001* (NIBRVP550794); Gapyeong-gun, Seorak-myeon, Mt. Yumyeongsan, 4 April 2008, *B.K. Kwon 080404-375* (NIBRVP532404); Gapyeong-gun, Seorak-myeon, Mt. Yumyeongsan, 4 April 2008, *G.Y. Chung ANH-en-080404-001* (NIBRVP197125); Hanam-si, Baealmi-dong, Mt. Geomdansan, 3 April 2007, *J.O. Hyun, H.K. Park & J.A. Eom VP-NAPI-377054-092* (NIBRVP111433); Namyangju-si, Hwado-eup, Mt. Cheonmasan, 15 April 2007, *W.K. Paik VP-KB-377061-0133* (NIBRVP815506); Namyangju-si, Hwado-eup, Mt. Cheonmasan, 22 March 2013, *Song et al. s.n.* (NIBRVP464822); Namyangju-si, Onam-eup, Onam-ri, Mt. Cheonmasan, 6 April 2009, *G.H. Nam, M.H. Kim & J.H. Lee VS15* (NIBRVP206699); Namyangju-si, Onam-eup, Onam-ri, Mt. Cheonmasan, 6 April 2009, *G.H. Nam, M.H. Kim & J.H. Lee VS16* (2 sheets, NIBRVP206700); Namyangju-si, Mt. Chungnyeongsan, 28 March 1999, *S.P. Hong & K.W. Park 411* (NIBRVP102296). Gangwon-do: Cheorwon-gun, Geunnam-myeon, Mt. Gwangdoeksan, 12 May 1997, *S.P. Hong & H.S. Choi 99* (NIBRVP102297); Donghae-si, Bugok-dong, Mita Temple, 26 April 2011, *G.H. Nam & W.J. Jeong SHY2-34* (NIBRVP284290); Gangneung-si, Wangsan-myeon, Mt. Hwaranbong, 30 April 2009, *J.H. Kim & H.J. Kim VP-KB-0904-0071* (NIBRVP318582); Hwacheon-gun, Mt. Baekjeoksan, 24 May 2000, *K.Ch. Yang & J.D. Jung s.n.* (NIBRVP102304, NIBRVP102305); Hwacheon-gun, Mt. Baekjeoksan, 3 August 2000, *J.H. Kim & D.K. Kim 49* (NIBRVP102307); Hwacheon-gun, Sanae-myeon, Mt. Gwangdoeksan, 7 April 2009, *G.H. Nam, M.H. Kim & J.H. Lee VS24* (2 sheets, NIBRVP206708); Hwacheon-gun, Sanae-myeon, Mt. Gwangdoeksan, 7 April 2009, *G.H. Nam, M.H. Kim & J.H. Lee VS25* (2 sheets; NIBRVP206709). Chungcheongbuk-do: Danyang-gun, Gagok-myeon, Mt. Sobaeksan, 17 May 1999, *C.W. Park, H.W. Lee & J. Koh 10315* (NIBRVP815505); Danyang-gun, Gagok-myeon, Mt. Sobaeksan, 20 April 2007, *G.Y. Chung ANH-en-070420-013* (NIBRVP121631). Jeollabuk-do: Jangsu-gun, Gyenam-myeon, Jangan-ri, 21 September 1997, *B.Y. Sun & C.H. Kim 10361* (NIBRVP815504); Jangsu-gun, Gyenam-myeon, Mt. Jangansan, 19 May 2007, *B.Y. Sun 2271* (NIBRVP128343); Jangsu-gun, Gyenam-myeon, Mt. Jangansan, 19 June 2009, *J.K. Ahn, S.J. Lee & Y.W. Lee CH40006* (NIBRVP266477); Jangsu-gun, Gyenam-myeon, Mt. Jangansan, 19 June 2009, *J.K. Ahn, S.J. Lee & Y.W. Lee CH40239* (NIBRVP266707); Jinan-gun, Jucheon-myeon, Daebul-ri, Mt. Unjangsan, without date, *C.H. Kim & S.H. Lee 50051* (3 sheets, NIBRVP537859). Gyeongsangnam-do: Geochang-gun, Buksang-myeon, Mt. Deogyusan hyangjeokbong-satgatgoljae, 31 May 2006, *B.Y. Sun 1577* (4 sheets, NIBRVP119643).

Note: The holotype is deposited in SKK.

Juncaceae

Juncus baekdusanensis M. Kim (2014: 239)

Isotype: [CHINA]: Mt. Baekdusan, 10 July 2014, *M. Kim 20140321* (NIBRVP814948; Fig. 1-24).

Paratype: [CHINA]: Mt. Baekdusan, 5 August 2014, *M. Kim 20140345* (NIBRVP814949).

Note: These specimens were transferred to KB from JNU. The holotype is preserved at KH (!), and another isotype is preserved at NNH (!). Korea National Arboretum (2019) treated *J. baekdusanensis* as a synonym of *J. stygius* subsp. *americanus* (Buchenau) Hultén.

Luzula odaesanensis Y.N. Lee & Y. Chae ex M. Kim (2017: 372)

Isotype: KOREA, Gangwon-do: Pyeongchang-gun, Jinbu-myeon, Woljeongsa Temple, 16 May 2016, *H. Jo JE50157* (NIBRVP814946; Fig. 1-25).

Note: This specimen was transferred to KB from JNU. When the name *L. odaesanensis* was proposed by Lee (1996) with Latin description and indication of type (*Lee & Oh s.n.*), it was not validly published because its protologue lacked either the indication “typus” or “holotypus,” its abbreviation, or its equivalent in a modern language, and thus it is contrary to Art. 40.6 of the *Code* (Turland *et al.* 2018). The name was validated by Kim (2017) as the name of a new species with an English description and indication of type (*H. Jo JE50157* at JNU) that included the word “TYPE.” The holotype and another isotype are preserved in KH (!) and NNH (!), respectively. Korea National Arboretum (2019) treated *L. odaesanensis* as a synonym of *L. plumose* E. Mey.

Cyperaceae

Carex brevispicula Gi Heum Nam & G.Y. Chung (2020: 396)

Holotype: KOREA, Jeollabuk-do: Jinan-gun, Seongsu-myeon, Jwapo-ri, Punghyeollaengcheon, 13 May 2011, *G.H. Nam Carex201_1* (NIBRVP291950; Fig. 1-26).

Isotypes: KOREA, Jeollabuk-do: Jinan-gun, Seongsu-myeon, Jwapo-ri, Punghyeollaengcheon, 13 May 2011, *G.H. Nam Carex201_2* (NIBRVP619368), *Carex201_3* (NIBRVP619369).

Paratypes: KOREA, Gangwon-do: Jeongseon-gun, Gohan-eup, Gohna-ri, Mt. Hambaeksan, 4 June 2013, *G.H. Nam NGH13-196* (2 sheets, NIBRVP435122); Pyeongchang-gun, Jinbu-myeon, Dongsan-ri, Woljeongsa Temple, 2 June 2012, *J.H. Kim Carex-Kim130* (2 sheets, NIBRVP362158). Gyeongsangnam-do: Hamyang-gun, Macheon-myeon, Samjeong-ri, Mt. Jirisan, 6 June 2010, *G.H. Nam & J.H. Do Carex35* (4 sheets, NIBRVP291986); Miryang-si, Sannae-myeon, Samyang-ri, Mt. Gajisan, 7 May 2011, *G.H. Nam Carex173* (5 sheets, NIBRVP291922). Jeollanam-do: Boseong-gun, Mundeok-myeon, Juksan-ri, Mt. Cheongsengsan, 24 April 2010, *J.H. Kim & Y.H. Cho Kim110769* (NIBRVP353066); Gurye-gun, Sandong-myeon, Jwasa-ri, Mt. Jirisan, Nogodan, 6 June 2006, *J.H. Kim KJH162* (NIBRVP274808), *KJH163* (NIBRVP274809). Seoul: Nowon-gu, Sanggye-dong, Mt. Buramsan, 6 May 2014, *C.S. Lee Leecs1354* (NIBRVP505672).

Note: Previously, Jang *et al.* (2020) provided information on its holotype and isotypes, but at that time, the name *C. brevispicula* was not validly published. When Nam *et al.* (2020) validly published it, its paratypes as well as its holotype and isotypes were designated. Their information is provided here.

Fimbristylis driziae Jonghwan Kim & M. Kim (2015: 9), ‘*drizae*’.

Isotype: KOREA, Jeollabuk-do: Jeongeup-si, Lake Sucheong, 28 September 2013, *J.H. Kim 13159-2* (NIBRVP814952; Fig. 1-27).

Paratypes: KOREA, Chungcheongnam-do: Buyeo-gun, Chunghwa-myeon, Gahwa-ri, Deogyongjeosuji, 24 September 2009, *J.D. Jung & C.K. Kim 0909181-1* (NIBRVP254635); Buyeo-gun, Eunsan-myeon, Chugyungbong, 3 September 2000, *S.M. Seo et al. 382* (NIBRVP24469). Daegu-si: Dalseong-gun, Habin-myeon, Hasan-ri, Nakdong River, 7 October 2010, *K.S. Jeong & J.S. Yun 480* (NIBRVP274479). Gyeongsangnam-do: Hapcheon-gun, Deokgok-myeon, Podu-ri, Mt. Sohaksan, 2 October 2007, *S.C. Ko & J.H. Kim VP-KB-358061-0174* (NIBRVP496500). Jeollanam-do: Muan-gun, Samhyang-myeon, Yugyo-ri, Namyangje, 11 October 2009, *J.H. Kim & Y.H. Jo KJH472* (NIBRVP275118); Jangseong-gun, Lake Jangseong, 28 August 2012, *J.H. Kim 12043* (NIBRVP814953).

Note: Kim & Kim (2015) cited *J.H. Kim 13158* as its holotype and isotypes. All of the isotype specimens, however, were stamped as isotypes, and were recorded as *J. H. Kim 13159-1* in NNH and *J. H. Kim 13159-2* in KB (NIBRVP814952). Therefore, according to Art. 9.2 of the *Code* (Turland *et al.* 2018), a correction to the isotype citation is needed. In

addition, Kim & Kim (2015) designated “Jeollanam-do: Gangjin-gun, 19 August 2012, *J.H. Kim 12043*” as a paratype. One specimen of *J.H. Kim 12043* (NIBRVP814953) was transferred to KB from JNU and stamped as the paratype. However, it seems that the specimen is not a type because it was collected from a different locality (“Jeollanam-do, Jangseong-gun, Lake Jangseong”) and on a different date (“28 August 2012”). The holotype is conserved in KH (!).

Fimbristylis jindoensis Jonghwan Kim & M. Kim (2015: 319)

Isotype: KOREA, Jeollanam-do: Jindo-gun, Jisan-myeon, 22 July 2014, *J.H. Kim 141308* (NIBRVP814944; Fig. 1-28).

Paratype: KOREA, Jeollanam-do: Jindo-gun, Imhoe-myeon, 22 July 2014, *J.H. Kim 141288* (NIBRVP814943).

Note: These specimens were transferred to KB from JNU. The holotype and another isotype preserved in KH (!) and NNH (!), respectively.

Poaceae

Miscanthus wangpicheonensis Tae-Im Heo & J.S. Kim (2021: 57)

Holotype: KOREA, Gyeongsangbuk-do: Uljin-gun, Geunnam-myeon, Susan-ri, Wangpicheon, 14 August 2020, *Tae-Im Heo heo20101* (NIBRVP779340; Fig. 1-29).

Note: The isotype is preserved in KBA (!).

Liliaceae

Allium deltoidefistulosum S.O. Yu, S. Lee & W. Lee ex M. Kim (2017: 405)

Isotype: KOREA, Jeollabuk-do: Namwon-si, Sannaem-myeon, Mt. Segeolsan, 2 October 2015, *H. Jo JFA0201* (NIBRVP814960; Fig. 1-30).

Note: This specimen was transferred to KB from JNU. When the name *A. deltoidefistulosum* was proposed by Yu *et al.* (1981: 30), it was not validly published because two gatherings (*Yoo 6102, 6420*) were designated as types, and it is contrary to Art. 40.2 of the *Code* (Turland *et al.* 2018). The name was validated by Kim (2017) with an English description and indication of type (*H. Jo JFA0201* at JNU). The holotype is conserved in KH (!), and another isotype is deposited in NNH (!). Shukherdorj *et al.* (2018) treated *A. deltoidefistulosum* as a synonym of *A. thunbergii* G. Don.

Allium dumberchum H.J. Choi (2021: 8)

Isotype: KOREA, Gyeongsangbuk-do: Ulleung-gun, Namyang, 8 October 2020, *H.J. Choi 201008-001* (NIBRVP815478; Fig. 1-31).

Paratypes: KOREA, Gyeongsangbuk-do: Ulleung-gun, 3 September 2008, *S.T. Kim & S.K. So SK2008-019-096* (NIBRVP205843); Ulleung-gun, 15 October 2009, *S.H. Kim ksh84* (NIBRVP246241); Ulleung-gun, Gallyeong, 23 August 2005, *H. Kim KH1283* (NIBRVP203887), *H. Kim & M.J. Song 1073* (3 sheets, NIBRVP182436), *H. Kim, M.J. Song & D.H. Shin 1406* (NIBRVP732384); Hyeonpo, 4 October 2011, *J.H. Park & K.H. Kim 19-1* (2 sheets, NIBRVP380193); Nari Basin, 25 September 2001, *J.S. Kim s.n.* (NIBRVP307168); Sadong-ri, 12 October 2005, *J.O. Hyun, J.D. Kim & M.A. Jung NAPI-20101161* (2 sheets, NIBRVP294032).

Note: The holotype is preserved in KH, and other isotypes are deposited in the herbaria of Changwon National University, KH, and KIOM.

Allium ullengense H.J. Choi & N. Friensen (2019: 294)

Isotype: KOREA, Gyeongsangbuk-do: Ulleng-gun, Buk-myeon, Nari, 5 June 2019, *H.J. Choi 190605-001* (NIBRVP781252; Fig. 1-32).

Note: This isotype was donated by KH. The holotype is conserved in KH (KHB1592342!).

Hosta clausa* var. *geumgangensis M. Kim & H. Jo (2016: 307)

Isotype: KOREA, Jeollabuk-do: Jinan-gun, Jinan-eup, Gamak-ri, Geumgang River, 24 August 2015, *H. Jo JF82402* (NIBRVP809574; Fig. 1-33).

Note: The holotype is preserved in KH (!), and other isotypes are deposited in KH (!) and NNH (!).

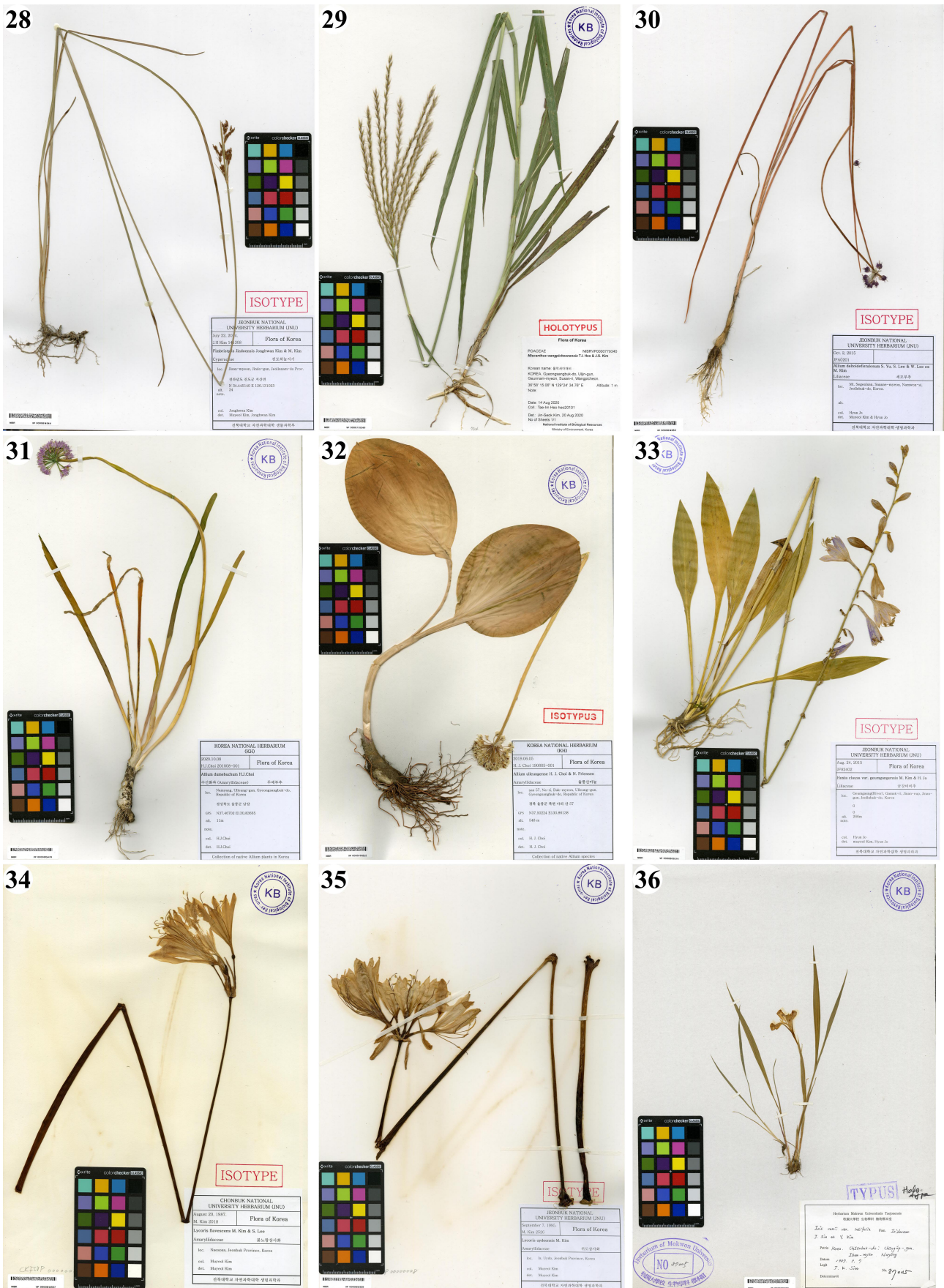


FIGURE 1. (Continued)

28. *Fimbristylis jindoensis*, 29. *Miscanthus wangpicheonensis*, 30. *Allium deltoideifistulosum*, 31. *Allium dumebuchum*, 32. *Allium ullengense*, 33. *Hosta clausa* var. *geumgangensis*, 34. *Lycoris flavescens*, 35. *Lycoris uydoensis*, 36. *Iris rossii* var. *latifolia*.

Amaryllidaceae

Lycoris flavescens M. Kim & S.T. Lee (2004: 13)

Isotype: KOREA, Jeollabuk-do: Naesosan, 20 August 1987, *M. Kim 2018* (NIBRVP814937; Fig. 1-34).

Note: This isotype was transferred to KB from JNU. The name *L. flavescens* was proposed by Kim & Lee (1991: 127), but it was not validly published because two gatherings from two different times (20 August 1987 and 5 March 1990) were designated as types, and it is contrary to Art. 40.2 of the *Code* (Turland *et al.* 2018). Later, Kim (2004) validated the name. The holotype is conserved in KH (!), and another isotype is deposited in NNH (!).

Lycoris uydoensis M. Kim (2004: 14)

Isotype: KOREA, Jeollabuk-do: Is. Uydo, 7 September 1995, *M. Kim 2526* (NIBRVP814936; Fig. 1-35).

Note: This specimen was transferred to KB from JNU. The name *L. flavescens* var. *uydoensis* was proposed by Kim (1996: 263) with a Latin description and indication of its type (7 September 1995, *M. Kim 2526* at JNU), but it was not validly published because the name of the species to which it is assigned was not validly published at the same time or earlier, and it is contrary to Art. 35.1 of the *Code* (Turland *et al.* 2018). Later, Kim (2004) recognized *L. flavescens* var. *uydoensis* as a distinct species and validly published the name of the new species, *L. uydoensis*. However, there is a discrepancy in the collecting date of the type (*M. Kim 2526*); Kim (2004) indicated “20 September 1995” as the collecting date of the type in the protologue, but indicated “7 September 1995” under the subheading “Appendix: Specimens examined for this study.” The holotype of *L. uydoensis* at KH (!) was collected on “7 September 1995”; therefore, it is likely that the type citation “20 September 1995” is an error and “7 September 1995” is the correct collecting date (see Art. 9.2 of the *Code*). Other isotypes are conserved in KH (!) and NNH (!).

Iridaceae

Iris rossii var. *latifolia* J.K. Sim & Y.S. Kim (1992: 1)

= *I. rossii* f. *latifolia* (J.K. Sim & Y.S. Kim) M. Kim (2017: 570)

Holotype: KOREA, Jeollabuk-do: Chongup-gun, Ibam-myeon, Noryeong, 7 May 1987, *J.K. Sim 87001* (NIBRVP815290).

Isotypes: KOREA, Jeollabuk-do: Chongup-gun, Ibam-myeon, Noryeong, 7 May 1987, *J.K. Sim 87003* (NIBRVP815291); *87004* (NIBRVP815288); *87005* (NIBRVP815289; Fig. 1-36).

Paratypes: KOREA, Daejeon-si: Mt. Bomunsan, 19 May 1990, *J.K. Sim s.n.* (4 sheets, NIBRVP815292, NIBRVP815293, NIBRVP815294, NIBRVP815295); Mt. Sikjangan, 21 April 1990, *J.K. Sim s.n.* (4 sheets, NIBRVP815299, NIBRVP815300, NIBRVP815301, NIBRVP815302). Chungcheongnam-do: Gongju-si, Banpo-myeon, Oncheon-ri, Mt. Gapasan, 30 April 1992, *Y.I. Kim 70* (NIBRVP815296); Gongju-si, Gyeryong-myeon, Mt. Gyeryongsan, 4 May 1987, *J.K. Sim 27* (NIBRVP815297). Jeollanam-do: Mt. Daedunsan, 8 May 1987, *B.J. Yu s.n.* (NIBRVP815298).

Note: These specimens were transferred to KB from the herbarium of Mokwon University. Some of the paratype specimens donated by Sim & Kim (1992) were not found in KB.

Sisyrinchium angustifolium f. *album* J.K. Sim & Y.S. Kim (1992: 3)

Holotype: KOREA, Jeju-do: Jeju-si, Ara-dong, 12 June 1987, *J.K. Sim 87002* (NIBRVP815303).

Isotypes: KOREA, Jeju-do: Jeju-si, Ara-dong, 12 June 1987, *J.K. Sim 87006* (NIBRVP815473); *87007* (NIBRVP815474); *87008* (NIBRVP815475).

Paratype: KOREA, Jeju-do: Jeju-si, Ara-dong, 10 June 1988, *J.K. Sim 88001* (NIBRVP815476).

Note: These specimens were transferred to KB from the herbarium of Mokwon University.

Acknowledgements

We thank everyone who donated specimens to the National Institute of Biological Resources. This work was supported by a grant from the National Institute of Biological Resources (NIBR) and funded by the Ministry of Environment (MOE) of the Republic of Korea (NIBR202107101).

References

- Bridson, E. & Forman, L. (1998) *The Herbarium Handbook*, 3rd ed. The Royal Botanic Gardens, Kew, 334 pp.
- Choi, H.J., Yang, S., Yang, J.C. & Friesen, N. (2019) *Allium ulleungense* (Amaryllidaceae), a new species endemic to Ulleungdo Island, Korea. *Korean Journal of Plant Taxonomy* 49: 294–299.
<https://doi.org/10.11110/kjpt.2019.49.4.294>
- Cronquist, A. (1981) *An integrated system of classification of flowering plants*. Columbia University Press, New York, 1262 pp.
- Ha, Y.-H., Son, D.C. & Kim, D.-K. (2020) Validation of a fern hybrid from Korea, *Asplenium* × *bimixtum* (Aspleniaceae). *Phytotaxa* 433: 295–296.
<https://doi.org/10.11646/phytotaxa.433.4.5>
- Heo, T.I., Kim, J.-H., Ku, Y.B. & Kim, J.S. (2021) *Miscanthus wangpicheonensis* T.I. Heo & J.S. Kim (Poaceae): A new species from Korea. *Journal of Species Research* 10: 57–62.
<https://doi.org/10.12651/JSR.2021.10.1.057>
- Hwang, Y., So, S. & Kim, M. (2013) New species of *Euonymus* (Celastraceae): *E. baekdusanensis* M. Kim. *Korean Journal of Plant Taxonomy* 43: 168–170.
<https://doi.org/10.11110/kjpt.2013.43.3.168>
- Jang, H.D., Park, J.-M., Hyun, C.-W., Lee, B.-Y. & Noh, T.-K. (2020) Type specimens of vascular plants in the herbarium of the National Institute of Biological Resources (KB) of the Republic of Korea. *Phytotaxa* 434: 170–182.
<https://doi.org/10.11646/phytotaxa.434.2.3>
- Jang, J.E., Park, J.S., Jung, J.Y., Kim, D.K., Yang, S. & Choi, H.J. (2021) Notes on *Allium* section *Rhizirideum* (Amaryllidaceae) in South Korea and northeastern China: with a new species from Ulleungdo Island. *PhytoKeys* 176: 1–19.
<https://doi.org/10.3897/phytokeys.176.63378>
- Jeong, K.S., Shin, J.-K., Jang, K.S. & Choi, K. (2017) *Galium verum* var. *hallaensis*, a replacement name for the Korean *Galium pusillum* Nakai (Rubiaceae). *Phytotaxa* 302: 95–96.
<https://doi.org/10.11646/phytotaxa.302.1.10>
- Jo, H. & Kim, M. (2016) A new variety of *Hosta* (Liliaceae): *Hosta clausa* var. *geumgangensis* M. Kim & H. Jo. *Korean Journal of Plant Taxonomy* 46: 306–313.
<http://doi.org/10.11110/kjpt.2016.46.3.306>
- Jo, H. & Kim, M. (2019) A taxonomic study of the genus *Pseudostellaria* in Korea. *Korean Journal of Plant Taxonomy* 49: 145–178.
<https://doi.org/10.11110/kjpt.2019.49.2.145>
- Jo, H., Shin, C. & Kim, M. (2014) A new species of *Pseudostellaria* (Caryophyllaceae): *P. baekdusanensis* M. Kim. *Korean Journal of Plant Taxonomy* 44: 171–174.
<https://doi.org/10.11110/kjpt.2014.44.3.171>
- Jo, H., Shin, C., Seo, E. & Kim, M. (2018) A new species of *Potentilla* (Rosaceae): *P. baekdusanensis* M. Kim. *Korean Journal of Plant Taxonomy* 48: 37–42.
<https://doi.org/10.11110/kjpt.2018.48.1.37>
- Kim, J.H. & Kim, M. (2015) A new species of *Fimbristylis* (Cyperaceae): *F. drizae* J. Kim & M. Kim. *Korean Journal of Plant Taxonomy* 45: 8–11.
<https://doi.org/10.11110/kjpt.2015.45.1.8>
- Kim, J.H. & Kim, M. (2015) A new species of *Fimbristylis* (Cyperaceae): *F. jindoensis* J. Kim & M. Kim. *Korean Journal of Plant Taxonomy* 45: 318–322.
<http://doi.org/10.11110/kjpt.2015.45.4.318>
- Kim, M. (1996) *Lycoris flavescens* var. *uydoensis* M. Kim: A new variety of *Lycoris* (Amaryllidaceae) from Korea. *Korean Journal of Plant Taxonomy* 26: 263–269.
- Kim, M. (2004) A taxonomic review of Korean *Lycoris* (Amaryllidaceae). *Korean Journal of Plant Taxonomy* 34: 9–26.
- Kim, M. (2017) *Korean Endemic Plants*. Haejin Media Co., LTD., Seoul, 650 pp.
- Kim, M. & Lee, S. (1991) A taxonomical study of the Korean *Lycoris* (Amaryllidaceae). *Korean Journal of Plant Taxonomy* 21: 123–139.
- Kim, Y.I., Cho, S.H., Lee, J.H., Kang, D.H., Park, J.H. & Kim, Y.D. (2018) *Chrysosplenium ramosissimum* Y.I. Kim & Y.D. Kim (Saxifragaceae), a new species from Korea. *PhytoKeys* 111: 1–10.
<https://doi.org/10.3897/phytokeys.111.27182>
- Kim, Y.I., Shin, J.S., Lee, S., Chen, J.H., Choi, S., Park, J.H. & Kim, Y.D. (2019) A new species of *Chrysosplenium* (Saxifragaceae) from Northeastern China. *PhytoKeys* 135: 39–47.
<https://doi.org/10.3897/phytokeys.135.39036>

- Korea National Arboretum (2019) *Illustrated Juncaceae-Eriocaulaceae-Typhaceae of Korea*. Geobook Publishing Co., Seoul, 255 pp.
- Lee, C.S., Lee, K., Lee, S.G. & Ebihara, A. (2014) A new taxon of *Hymenophyllum* (Hymenophyllaceae): *H. wrightii* f. *serratum*. *Korean Journal of Plant Taxonomy* 44: 233–237.
<https://doi.org/10.11110/kjpt.2014.44.4.233>
- Lee, C.S., Lee, K., Yeau, S.H. & Chung, K.-S. (2015) Two new and one unrecorded natural hybrids between *Asplenium ruprechtii* and related taxa (Aspleniaceae). *Korean Journal of Plant Taxonomy* 45: 362–368.
<https://doi.org/10.11110/kjpt.2015.45.4.362>
- Lee, J., Choi, C., Han, K., So, S., Hwang, Y. & Kim, M. (2012) A new species of *Viola* (Violaceae): *V. ulleungdoensis* M. Kim & J. Lee. *Korean Journal of Plant Taxonomy* 42: 202–206.
- Lee, J., Hwang, Y. & Kim, M. (2014) A new species of *Viola* (Violaceae): *V. breviflora* Jungsim Lee & M. Kim. *Korean Journal of Plant Taxonomy* 44: 84–87.
<https://doi.org/10.11110/kjpt.2014.44.2.84>
- Lee, J., Lee, K.H., So, S., Choi, C. & Kim, M. (2013) A new species of *Daphne* (Thymelaeaceae): *D. jejuensis* M. Kim. *Korean Journal of Plant Taxonomy* 43: 94–98.
<https://doi.org/10.11110/kjpt.2013.43.2.94>
- Lee, J.S., Kim, S.H., Kim, Y., Kwon, Y., Yang, J., Cho, M.S., Kim, H.B., Lee, S., Maki, M. & Kim, S.C. (2021) *Symplocarpus koreanus* (Araceae; Orontioideae), a new species based on morphological and molecular data. *Korean Journal of Plant Taxonomy* 51: 1–9.
<https://doi.org/10.11110/kjpt.2021.51.1.1>
- Lee, Y.N. (1996) *Flora of Korea*. Kyo-Hak Publishing Co., LTD., Seoul, 1237 pp.
- Linnaeus, C. (1753) *Species Plantarum*, Vol. 1. Salvius, Stockholm, 560 pp.
- Miller, C.F. & Kim, M. (2002) *Ilex* × *wandoensis* C. F. Miller & M. Kim, a new hybrid species of *Ilex* (Aquifoliaceae) from Korea. *Korean Journal of Plant Taxonomy* 32: 293–299.
- Nam, G.H., Jang, H.D., Lee, B.-Y. & Chung, G.Y. (2020) *Carex brevispicula* (Cyperaceae), a new species from Korea. *Korean Journal of Plant Taxonomy* 50: 395–402.
<https://doi.org/10.11110/kjpt.2020.50.4.395>
- National Biodiversity Center. (2020) *Biodiversity Statistics of Korea (2019)*. National Institute of Biological Resources, Incheon, 329 pp.
- Oh, A., Han, S.H. & Oh, B.U. (2020) *Astilbe uljinensis* (Saxifragaceae), a new species from South Korea. *PhytoKeys* 161: 89–98.
<https://doi.org/10.3897/phytokeys.161.53019>
- Shukherdorj, B., Jang, J.E., Duchoslav, M. & Choi, H.J. (2018) Cytotype distribution and ecology of *Allium thunbergii* (= *A. sacculiferum*) with a special reference to South Korean populations. *Korean Journal of Plant Taxonomy* 48: 278–288.
<https://doi.org/10.11110/kjpt.2018.48.4.278>
- Sim, J.K. & Kim, Y.S. (1992) New taxa of Iridaceae from Korea. *Korean Journal of Plant Taxonomy* 22: 1–5.
- Smith, A.R., Pryer, K.M., Schuettpelz, E., Korall, P., Schneider, H. & Wolf, P.G. (2006) A classification for extant ferns. *Taxon* 55: 705–731.
<https://doi.org/10.2307/25065646>
- So, S. Jo, H. & Kim, M. (2014) A new species of *Potentilla* (Rosaceae): *P. gageodoensis* M. Kim. *Korean Journal of Plant Taxonomy* 44: 175–177.
<https://doi.org/10.11110/kjpt.2014.44.3.175>
- Son, D.C. & Chang, K.S. (2019) Effective typification of *Galium verum* var. *hallaensis*, a replacement name for the Korean *G. pusillum* (Rubiaceae). *Phytotaxa* 423: 289–292.
<https://doi.org/10.11646/phytotaxa.423.5.3>
- Son, D.C., Lee, D.-H. & Chang, K.S. (2017) Validation of the name *Anemone pendulise-pala* (Ranunculaceae). *Phytotaxa* 311: 200.
<https://doi.org/10.11646/phytotaxa.311.2.9>
- Turland, N.J., Wiersma, J.H., Barrie, F.R., Greuter, W., Hawksworth, D.L., Herendeen, P.S., Knapp, S., Kusber, W.-H., Li, D.-Z., Marhold, K., May, T.W., McNeill, J., Monro, A.M., Prado, J., Price, M.J. & Smith, G.F. (Eds.) (2018) *International Code of Nomenclature for algae, fungi, and plants (Shenzhen Code) adopted by the Nineteenth International Botanical Congress Shenzhen, China, July 2017*. [Regnum Vegetabile 159]. Glashütten: Koeltz Botanical Books, Oberreifenberg, 354 pp.
<https://doi.org/10.12705/Code.2018>
- Willdenow, C.L. (1810) *Species Plantarum, Editio Quarta, Tomus V. Pars I*. Impensis G. C. Nauk. Berolini, 542 pp.
- Yu, S.O., Lee, S.T. & Lee, W.T. (1981) A taxonomic study of the *Allium* species in Korea. *Korean Journal of Plant Taxonomy* 11: 21–41.
- Yun, K.W. & Kim, M. (2009) Taxonomic study of *Broussonetia* (Moraceae) in Korea. *Korean Journal of Plant Taxonomy* 39: 80–85.
- Yun, K.W., Jo, H. & Kim, M. (2014) A new species of *Juncus* (Juncaceae): *J. baekdusanensis* M. Kim. *Korean Journal of Plant Taxonomy* 44: 238–241.
<https://doi.org/10.11110/kjpt.2014.44.4.238>