



<https://doi.org/10.11646/phytotaxa.344.3.13>

Liu, H.J., Ding, C.H., He, J., Cheng, J., Pei, L.Y. & Xie, L. (2018) Complete chloroplast genomes of *Archiclematis*, *Naravelia* and *Clematis* (Ranunculaceae), and their phylogenetic implications. *Phytotaxa* 343 (3): 214–226.

Please note one page 8 in line 2.
 (Fig.6)

There should be a **FIGURE 6** as follow.

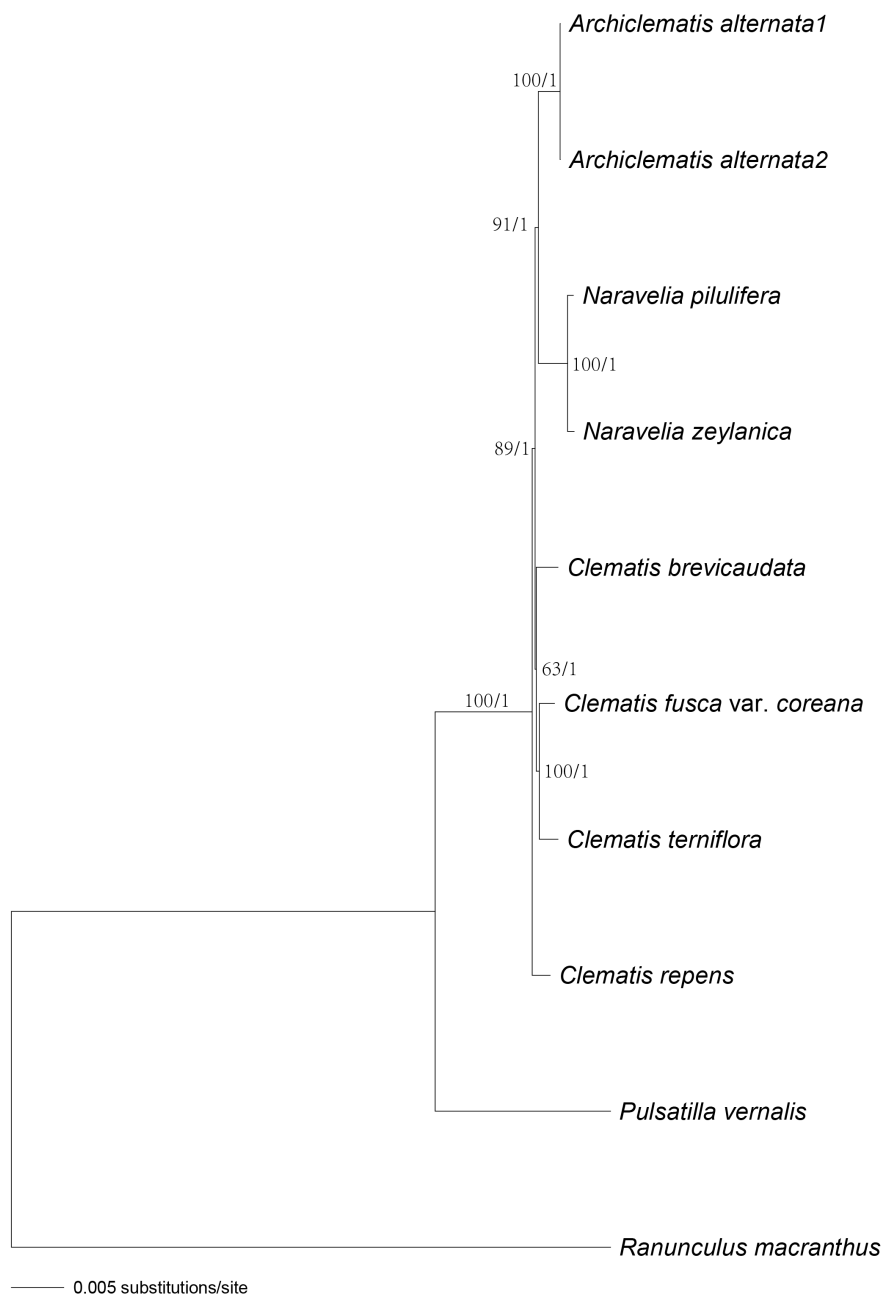


FIGURE 6. Phylogeny of *Clematis s.l.* species inferred from complete chloroplast genome sequences. Bayesian phylograms are shown with MP bootstrap values/PP values at each node.