



Validation of a fern hybrid from Korea, *Asplenium* × *bimixtum* (Aspleniaceae)

YOUNG-HO HA^{1,2}, DONG CHAN SON¹ & DONG-KAP KIM^{1*}

¹Department of Forest Biodiversity and Herbarium, Korea National Arboretum, Pocheon 11186, Republic of Korea.

²Department of Life Science, Gachon University, Seongnam 13120, Republic of Korea.

*Author for correspondence: botany7403@korea.kr

Asplenium × *montanum* C.S.Lee & K.Lee (2015: 364) was described as a multiple hybridization species with three parents, and represents an endemic fern occurring in shadowy forests of the Korean Peninsula (Chung *et al.* 2017). During the revision of the genus for Korea, however, it was discovered that this name is illegitimate since it is a later homonym of *Asplenium montanum* Willdenow (1810: 342) (Art. 53.1 of ICN; Turland *et al.* 2018). Although Lee & Lee (2018) proposed “*Asplenium* × *bimixtum* C.S.Lee & K.Lee” as replacement name, it was not validly published at that time (Art. 41. 5 of ICN, note 1 and Ex. 15) because it was referenced by the whole article (pp. 362–368) and not the single page with the basionym (p. 364) or by the protologue (pp. 364–368) only. Therefore, *A.* × *bimixtum* is validated here:.

Asplenium × *bimixtum* C.S.Lee & K.Lee ex Y.-H.Ha, *nom. nov.* Fig. 1

Replaced name:—*Asplenium* × *montanum* C.S.Lee & K.Lee (2015: 364), *nom. illeg.*, non *A. montanum* Willdenow (1810: 342).

Type:—REPUBLIC OF KOREA. Geonggi-do, Yeoncheon-gun, Mt. Seongsan, elev. 468 m, 20 September 2014, C.S. Lee & K. Lee 14092001 (holotype, KH [KHB1533235!], isotypes, KB [not seen], KH [KHB1533236!]).

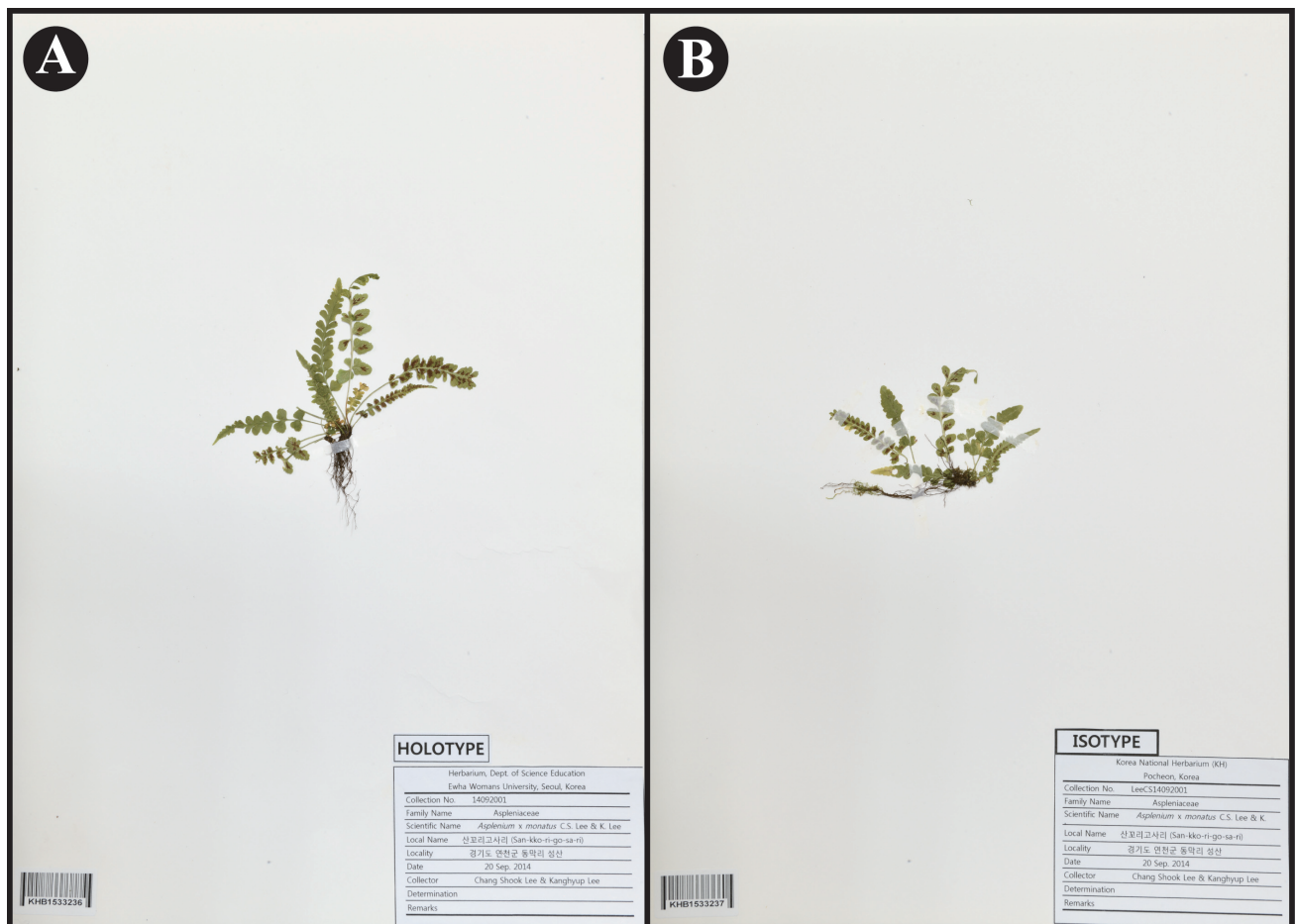


FIGURE 1. Type specimens of *Asplenium* × *bimixtum* A Holotype (KH), B Isotype (KH).

Acknowledgements

This study was supported by the Korea National Arboretum (project KNA1-1-13, 14-1). We thank anonymous reviewers for their comments on this manuscript and are indebted to Dr. Hee-Young Gil and Kang-Hyup Lee for valuable comments and revising the manuscript.

References

- Chung, G.Y., Chang, K.S., Chung, J.-M., Choi, H.J., Paik, W.-K. & Hyun, J.-O. (2017) A checklist of endemic plants on the Korean Peninsula. *Korean Journal of Plant Taxonomy* 47: 264–288.
<https://doi.org/10.11110/kjpt.2017.47.3.264>
- Lee, C.S., Lee, K., Yeau, S.H. & Chung, K.-S. (2015) Two new and one unrecorded natural hybrids between *Asplenium ruprechtii* and related taxa (Aspleniaceae). *Korean Journal of Plant Taxonomy* 45: 362–368.
<https://doi.org/10.11110/kjpt.2015.45.4.362>
- Lee, C.S. & Lee, K. (2018) *Pteridophytes of Korea: Lycophytes & Ferns*. Second Edition. Geobook, Seoul, 491 pp.
- Willdenow, C.L. (1810) *Species plantarum*. Tomus V. Editio Quarta. G.C. Nauk. Berlin, 542 pp.
<https://doi.org/10.5962/bhl.title.727>
- Turland, N.J., Wiersema, J.H., Barrie, F.R., Greuter, W., Hawksworth, D.L., Herendeen, P.S., Knapp, S., Kusber, W.-H., Li, D.-Z., Marhold, K., May, T.W., McNeill, J., Monro, A.M., Prado, J., Price, M.J. & Smith, G.F. (Eds.) (2018) *International Code of Nomenclature for algae, fungi, and plants (Shenzhen Code) adopted by the Nineteenth International Botanical Congress Shenzhen, China, July 2017*. [Regnum Vegetabile 159]. Koeltz Botanical Books, Glashütten,
<https://doi.org/10.12705/Code.2018>